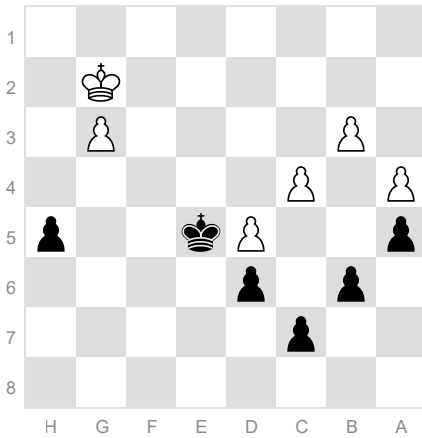
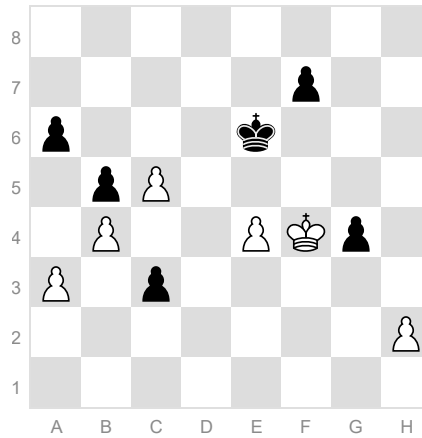


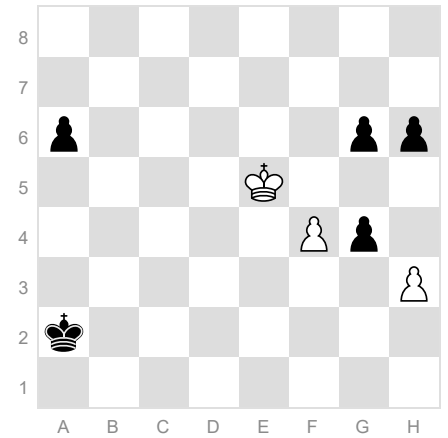
# Pawn Endgame Puzzles



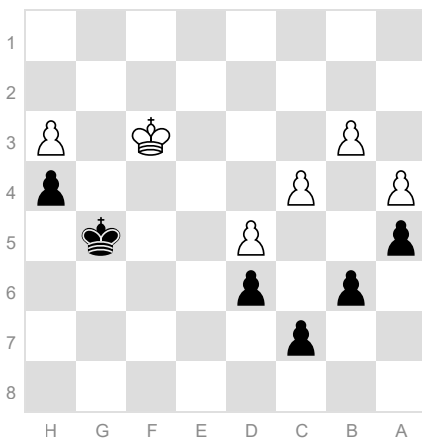
1. Black to play



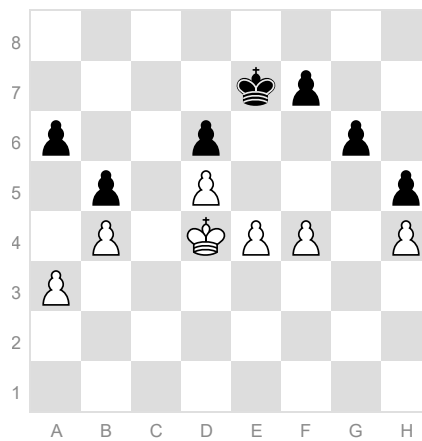
2. White to play



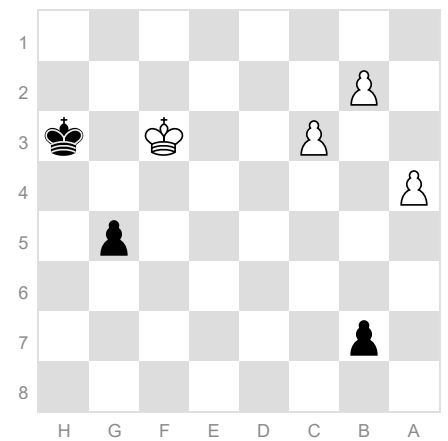
3. White to play



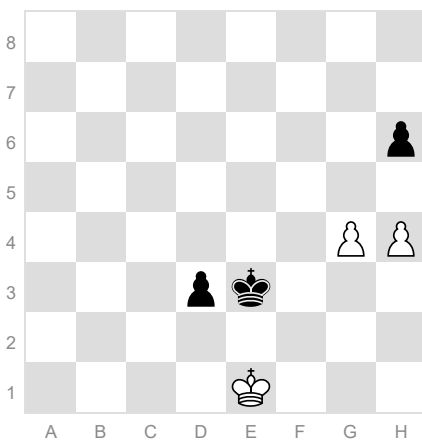
4. Black to play



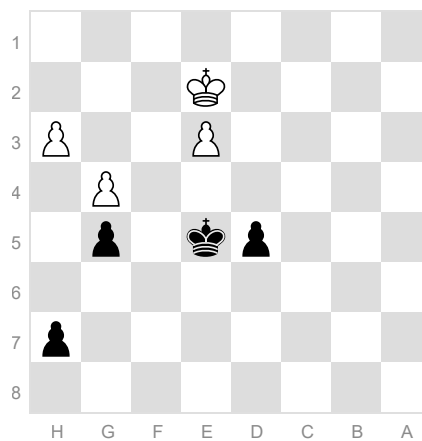
5. White to play



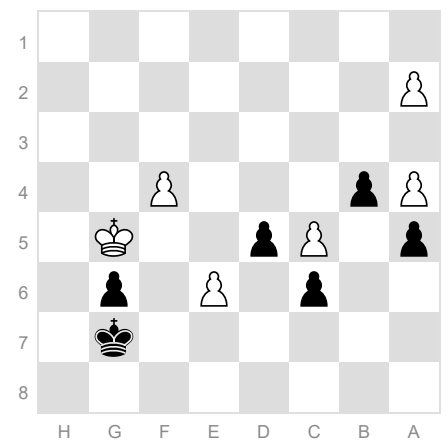
6. Black to play



7. White to play



8. Black to play



9. Black to play

## Answers:

1. Kd4, Kh3, Kc3, Kh4, Kxb3

2. Ke3, c2, Kd2, c1=Q+, Kxc1

3. hxg4, a5, f5, gxf5, gxf5, Kb3, f6, a4, f7, a3, f8=Q

4. Kf5, Ke3, Ke5

5. e5, dxe5+, fxe5

6. g4+, Kf2, Kh2

7. g5, d2+, Kd1, hxg5, hxg5, Kf4, g6

8. Ke4, Kd2, Kf3

9. d4, e7, Kf7, e8=B+, Kxe8